

VENTMASTER™ FROM RHEEM-RUUD WATER HEATERS

The POWER Direct Vent

Rheem-Ruud VentMaster™



VentMaster eliminates negative air pressure by drawing combustion air from outside the building.

EASE-OF-INSTALLATION

WHISPER-QUIET OPERATION

LARGE TANK VOLUME

It's a powerful solution for restaurants, hotels, laundromats and multi-family housing.

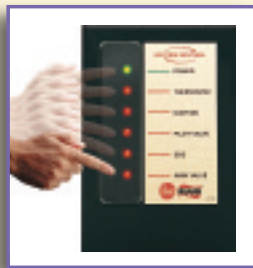
Commercial water heaters
from Rheem-Ruud



VentMaster™ POWER Direct Vent Commercial Gas Water heaters *from Rheem-Ruud*

VentMaster eliminates negative air pressure by drawing combustion air from outside the building.

- Available in 100 gallon tank-type models
- Installs with 3" or 4" Schedule 40 PVC pipe
- No masonry or metal vent chimney required
- **Non-condensing design** – helps prevent corrosion – no condensate pump or drain needed.
- **Integral automatic blower** – with 110/120 volt electrical system.
- **Patented multi-flue tank design** – proprietary steel formulation, patented multi-flue design, and two coats of high temperature porcelain enamel to maximize corrosion resistance result in a superior heat exchanger design.
- **Spark-To-Pilot ignition system** – standard on all models. Provides reliable and energy saving ignition sequencing by igniting the pilot only when the thermostat calls for heat.
- **System Sentinel™ LED diagnostic system** – our exclusive diagnostic system, with glowing LED lights, verifies system operation sequence by sequence.
- **Full port, full flow brass drain valve**
- **Temperature and pressure relief valve** – AGA/ASME rated and factory installed.
- **Hand-hole cleanout** – for removal of lime/sediment deposits.
- **Gas control system** – fully adjustable thermostat from 100° F to 180° F, 24 volt combination gas valve includes main gas pressure regulation, on-off manual valve, 120/24 volt transformer, and high limit temperature cut-out.



Rheem-Ruud VentMaster

RECOVERY CAPACITIES (80% thermal efficiency)

MODEL NUMBER	INPUT BTU/HR.	GPH										
		40°F	50°F	60°F	70°F	80°F	90°F	100°F	110°F	120°F	130°F	140°F
GP100-150	150,000	364	291	242	208	182	161	146	132	122	112	104
GP100-200	199,900	485	388	323	277	242	215	194	176	162	149	138
GP100-250(A)	250,000	606	485	404	346	303	269	242	220	202	186	173

CLEARANCE TO COMBUSTIBLES (inches)

MODEL NUMBER	SIDE	REAR	TOP
GP100-150	2	6	18
GP100-200	2	6	18
GP100-250(A)	2	6	18

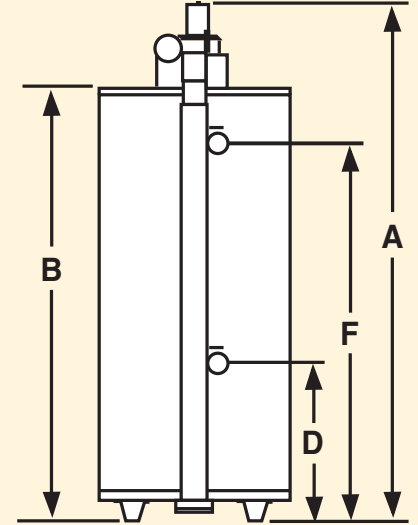
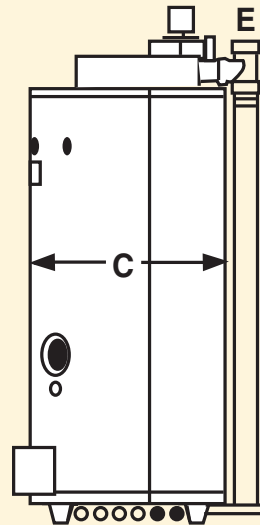
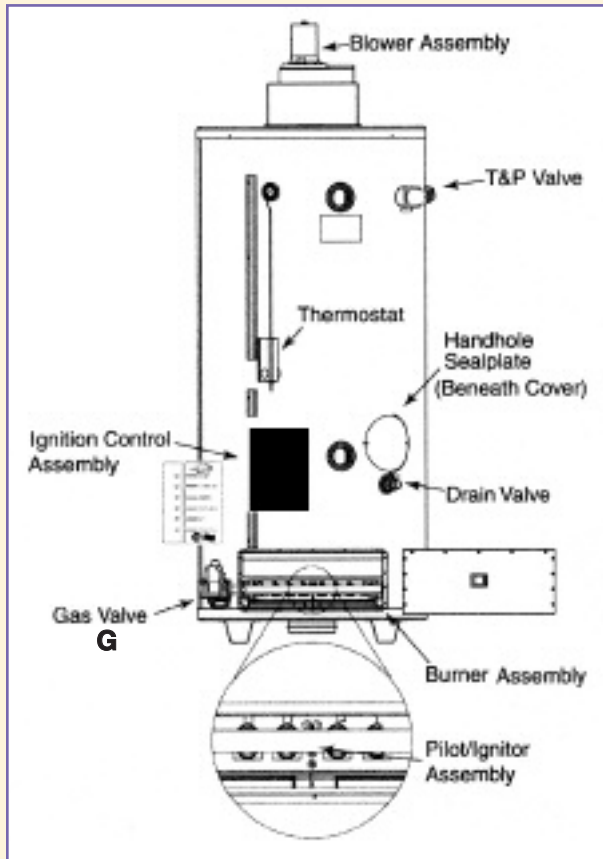
FIRST TIME DELIVERY (Includes useable storage and recovery for indicated times.)

MODEL NUMBER	TANK CAP. GALLONS	INPUT BTU/HR.	TEMP. RISE AT 100°F IN GALLONS							Minutes to Rec. Contents
			5 Minutes	10 Minutes	15 Minutes	20 Minutes	30 Minutes	45 Minutes	60 Minutes	
GP100-150	100	150,000	82	94	106	119	143	179	216	40
GP100-200	100	199,900	86	102	118	135	167	215	264	31
GP100-250(A)	100	250,000	90	110	131	151	191	252	312	25

DIMENSIONS (Inches)

MODEL NUMBER	A	B	C	D	E	F	G	WATER CONNECTIONS		APPROXIMATE SHIPPING WEIGHT
								FRONT IN/OUT	REAR SIDE	
GP100-150	81-3/4	68-1/4	30-1/4	24-3/4	3	59	3/4	2	2	860 lbs.
GP100-200	81-3/4	68-1/4	30-1/4	24-3/4	3	59	3/4	2	2	860 lbs.
GP100-250(A)	81-3/4	68-1/4	30-1/4	24-3/4	4	59	3/4	2	2	860 lbs.

VENTMASTER PARTS:



Commercial water heaters
from Rheem-Ruud



Rheem-Ruud VentMaster

LIMITED WARRANTY

This product features a three-year limited warranty against tank leaks. Please refer to Commercial Warranty Information brochure for complete warranty information.

CERTIFICATIONS AND RATINGS

EFFICIENCY

These models have been tested according to ANSI test procedures, and exceed the thermal efficiency and standby loss requirements of current ASHRAE Standards (Part of the Federally mandated Energy Policy Act (EPact)). Also exceeds energy efficiency codes of all states including California Energy Commission (CEC).

SAFETY AND CONSTRUCTION

These products are design certified by CSA:

- a) For operation up to 180°F.
- b) To meet all safety and construction requirements of ANSI Z21.10.3.
- c) As an automatic storage or instantaneous water heater.
- d) As an automatic circulating tank water heater.
- e) For operation on combustible floors and in alcove installations.

**CERTIFIED FOR A 150 PSI MAXIMUM WORKING PRESSURE
(160 PSI FOR ASME MODELS).**

OPTIONAL CONSTRUCTION

ASME Construction is available on designated models.



(On Selected Models)

In keeping with its policy of continuous progress and product improvement, Rheem-Ruud reserves the right to make changes without notice.

Commercial water heaters
from Rheem-Ruud



Rheem Water Heating • 101 Bell Road, Montgomery, AL 36117-4305
800-621-5622 • sales@rheem.com • www.rheem.com

Rheem Canada Ltd./Ltée • Water Heater Division • 128 Barton Street West, Hamilton, Ontario L8N 3P3
Not all models are available in Canada.

Printed in U.S.A 05/07 WP VM-130 Rev. 3